

**REGIONAL SPECIALISED METEOROLOGICAL CENTRE-TROPICAL CYCLONES, NEW DELHI
TROPICAL WEATHER OUTLOOK**

DEMS-RSMC SPECIAL TROPICAL CYCLONES NEW DELHI DATED 20.12.2022

TROPICAL WEATHER OUTLOOK FOR NORTH INDIAN OCEAN (THE BAY OF BENGAL AND THE ARABIAN SEA) VALID FOR NEXT 120 HOURS ISSUED AT 0600 UTC OF 20.12.2022 BASED ON 0300 UTC OF 20.12.2022.

BAY OF BENGAL:

YESTERDAY'S LOW PRESSURE AREA OVER CENTRAL PARTS OF SOUTH BAY OF BENGAL & ADJOINING EAST EQUATORIAL INDIAN OCEAN WITH THE ASSOCIATED CYCLONIC CIRCULATION EXTENDS UPTO MID-TROPOSPHERIC LEVELS PERSISTS. IT IS LIKELY TO MOVE WEST-NORTHWESTWARDS SLOWLY TOWARDS SRI-LANKA COAST DURING NEXT 2 DAYS.

AS PER SATELLITE IMAGERY CLOUDS ASSOCIATED WITH LOW PRESSURE AREA ARE SCATTERED TO BROKEN LOW AND MEDIUM CLOUDS WITH EMBEDDED INTENSE TO VERY INTENSE CONVECTION OVER SOUTH BAY OF BENGAL ADJOINING EQUATORIAL INDIAN OCEAN BETWEEN LAT 2.0N TO 10.0N LONG 82.0E TO 92.0E. MINIMUM CTT MINUS 90 DEG CEL.

SCATTERED TO BROKEN LOW AND MEDIUM CLOUDS WITH EMBEDDED INTENSE TO VERY INTENSE CONVECTION OVER SOUTH BAY OF BENGAL AND SOUTH ANDAMAN SEA. SCATTERED LOW AND MEDIUM CLOUDS WITH EMBEDDED ISOLATED WEAK TO MODERATE CONVECTION OVER EASTCENTRAL BAY OF BENGAL.

PROBABILITY OF CYCLOGENESIS (FORMATION OF DEPRESSION) DURING NEXT 120 HRS:

24 HOURS	24-48 HOURS	48-72 HOURS	72-96 HOURS	96-120 HOURS
NIL	NIL	NIL	NIL	NIL

ARABIAN SEA:

YESTERDAY'S LOW PRESSURE AREA OVER WESTCENTRAL ARABIAN SEA HAS BECOME LESS MARKED AT 0000 UTC OF TODAY THE 20TH DECEMBER.

SCATTERED LOW AND MEDIUM CLOUDS WITH EMBEDDED MODERATE TO INTENSE CONVECTION OVER COMORIN AREA ADJOINING SOUTHEAST ARABIAN SEA. SCATTERED LOW AND MEDIUM CLOUDS WITH EMBEDDED WEAK TO MODERATE CONVECTION OVER NORTH ARABIAN SEA & REST OF SOUTHEAST ARABIAN SEA.

PROBABILITY OF CYCLOGENESIS (FORMATION OF DEPRESSION) DURING NEXT 120 HRS:

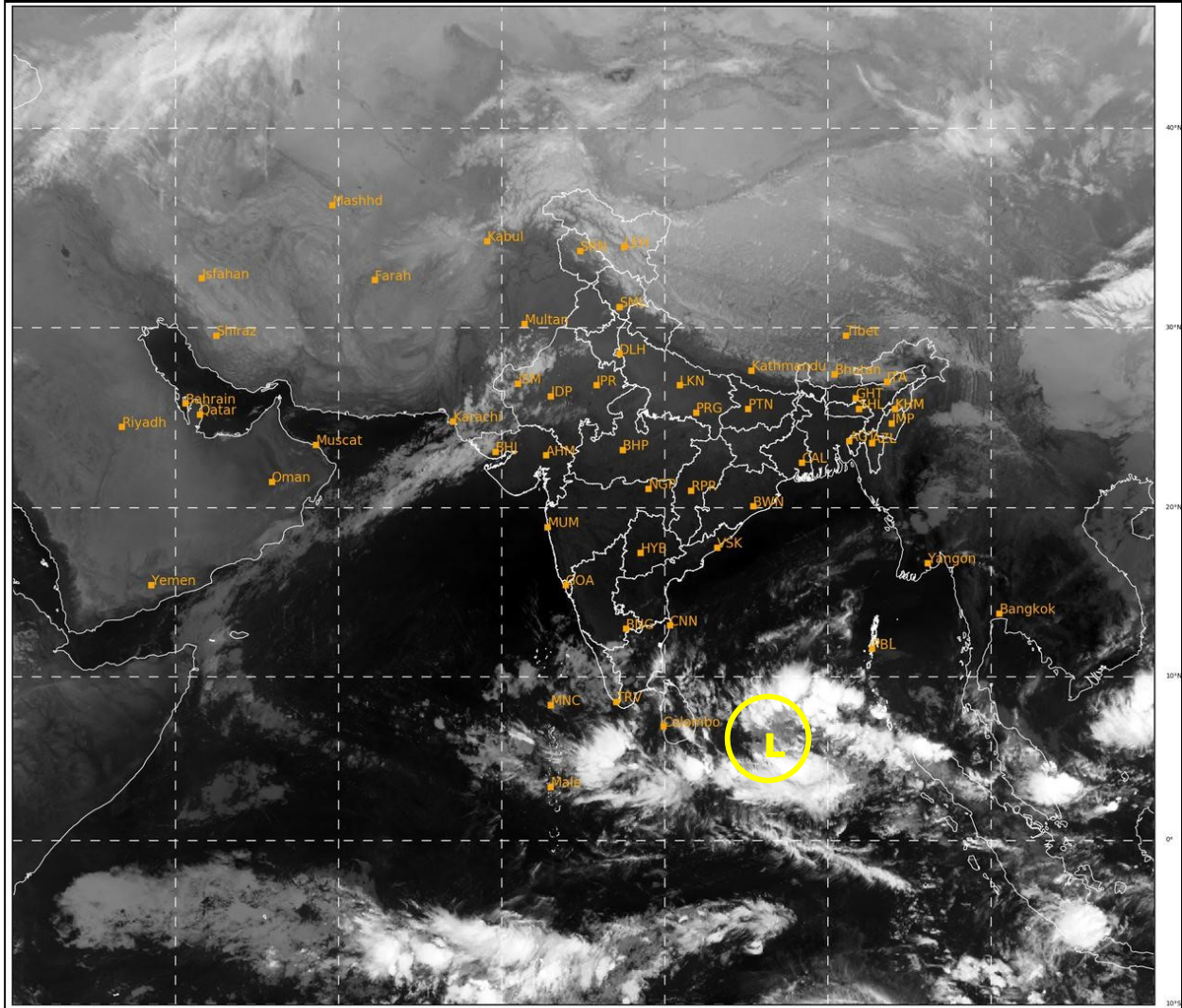
24 HOURS	24-48 HOURS	48-72 HOURS	72-96 HOURS	96-120 HOURS
NIL	NIL	NIL	NIL	NIL

Remarks:

NIL

SAT : INSAT-3D IMG
 IMG_TIR1 10.8 um
 LIC Mercator

20-12-2022/(0300 to 0326) GMT
 20-12-2022/(0830 to 0856) IST



518 936

IMD, DELHI

Cloud distribution: (a) Isolated: <25%, Scattered:25-50%, Broken: 51-75%, Solid:>75%, Convection Intensity: (a) Weak: Cloud Top Temperature (CTT) >-25°C, (b) Moderate: CTT: - 25°C to -40°C, (c) Intense: CTT: - 41°C to -70°C and (d) Very Intense: : Less than -70°C
 PROBABILITY OF CYCLOGENESIS (FORMATION OF DEPRESSION): NIL: 0%, LOW: 1-33%, MODERATE: 34-66% AND HIGH: 67-100%
 This is a guidance Bulletin for WMO/ESCAP Panel Member countries. Visit respective National websites for Country specific Bulletins